

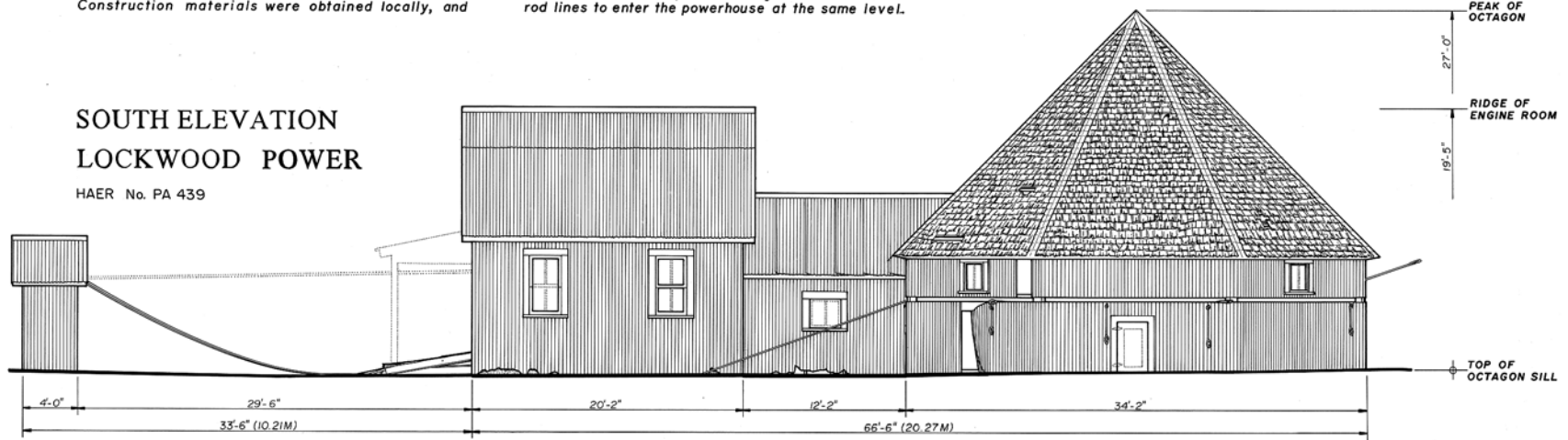
TRIM LINE

The octagon-shaped structures housing the Lockwood and Mead pumping powers are a regional variant of the standard rectangular powerhouses found in other oil fields. Octagons were built in this part of Pennsylvania from ca. 1905 to ca. 1930, and represent the highest aesthetic development of otherwise strictly utilitarian powerhouses. Construction materials were obtained locally, and

erected by local contractors specializing in pumping plant construction. These structures appear identical, but each differs slightly in the framing layout, interior configuration, and machinery. The Mead power's rod lines pierce the octagon on two levels because of that power's double eccentric, while the Lockwood power's single disk allows all the rod lines to enter the powerhouse at the same level.

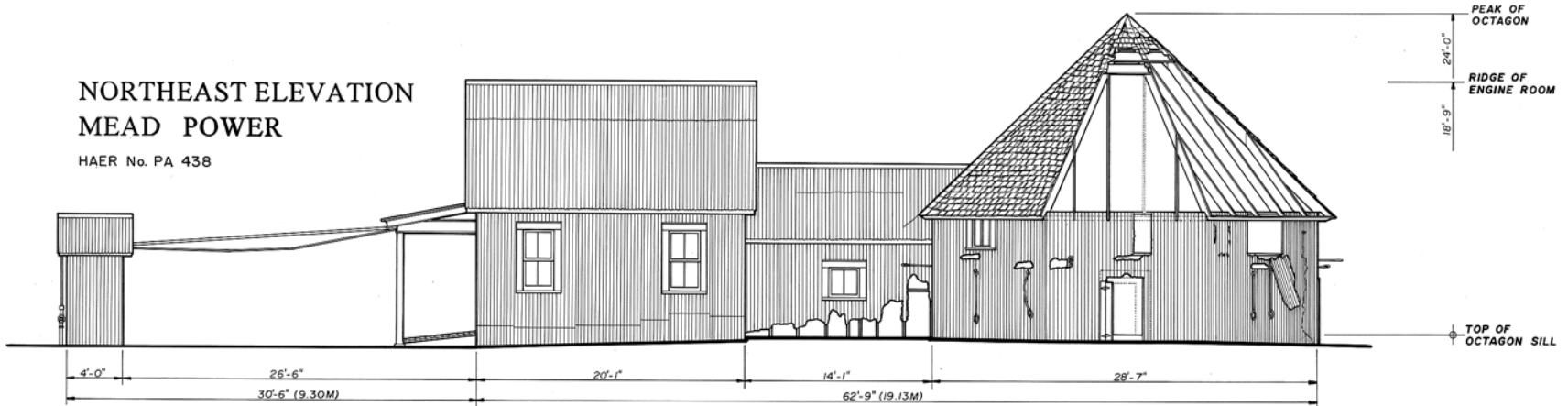
**SOUTH ELEVATION  
LOCKWOOD POWER**

HAER No. PA 439

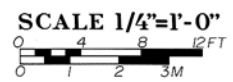


**NORTHEAST ELEVATION  
MEAD POWER**

HAER No. PA 438



**MEAD AND LOCKWOOD POWERS**



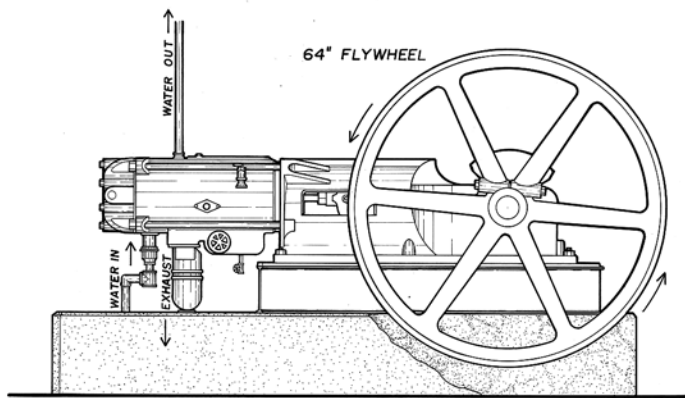
DELINEATED BY: ERIC S. ELMER, 1997  
 ALLSOUTH NATIONAL FOREST  
 OIL HERITAGE RECORDING PROJECT  
 UNITED STATES DEPARTMENT OF THE INTERIOR  
 BUREAU OF LAND MANAGEMENT  
 CLARENDON and WARREN VICINITIES  
 WARREN COUNTY  
 PENNSYLVANIA  
 SHEET 3 OF 3  
 HISTORIC AMERICAN ENGINEERING RECORD  
 PA - 438

IF REPRODUCED, PLEASE CREDIT: HISTORIC AMERICAN ENGINEERING RECORD, NATIONAL PARK SERVICE, NAME OF DELINEATOR, DATE OF THE DRAWING

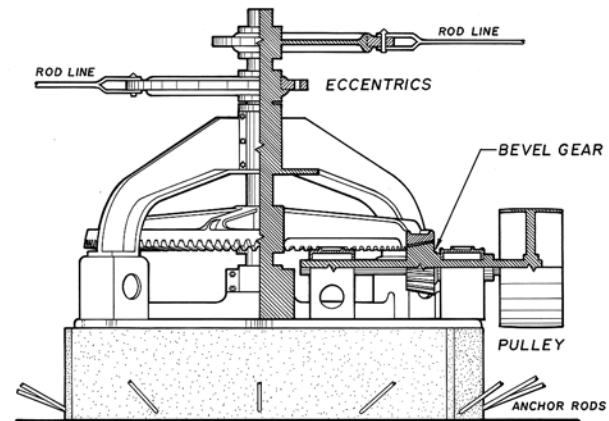
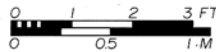
TRIM LINE



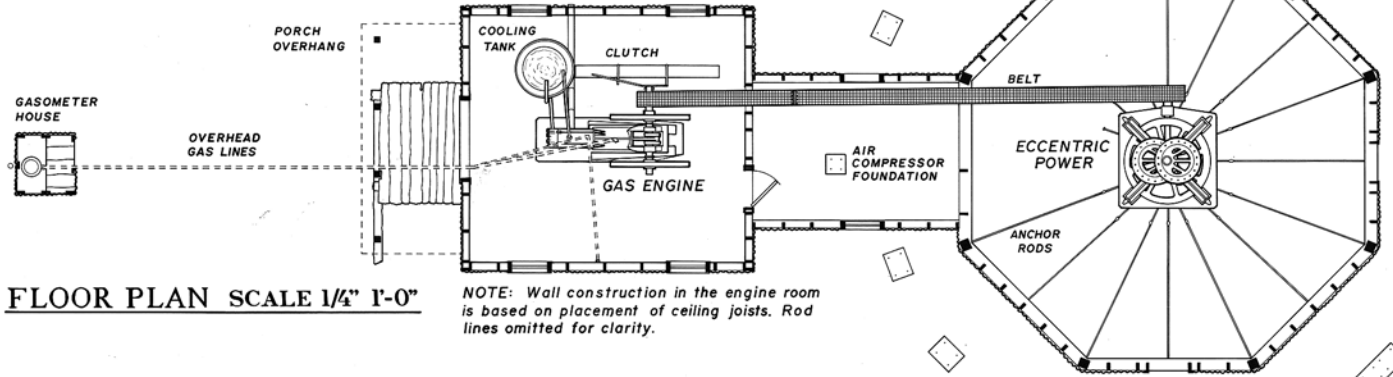
TRIM LINE



**GAS ENGINE SCALE 1"=1'-0"**  
Franklin Valveless Gas Engine



**ECCENTRIC POWER SCALE 1"=1'-0"**  
"J.C." Power with Double Eccentrics, Titusville Iron Works



**FLOOR PLAN SCALE 1/4" 1'-0"**

NOTE: Wall construction in the engine room is based on placement of ceiling joists. Rod lines omitted for clarity.



**MEAD POWER**

NOTE: Drawings show condition of structure and machinery as of summer of 1997.



DECLASSIFIED BY: ERIC S. ELMER, 1997  
 ALL ENERGY NATIONAL FOREST  
 OIL HERITAGE RECORDING PROJECT  
 UNIFIED BY THE NATIONAL ARCHIVES FOR THE INTERIOR

MEAD POWER - 1909  
 WARREN COUNTY  
 CLARENDON VICINITY

PENNSYLVANIA  
 SHEET 1 OF 3

HISTORIC AMERICAN  
 ENGINEERING RECORD  
 PA - 438

IF REPRODUCED, PLEASE CREDIT: HISTORIC AMERICAN ENGINEERING RECORD, NATIONAL PARK SERVICE, NAME OF DELINEATOR, DATE OF THE DRAWING

TRIM LINE