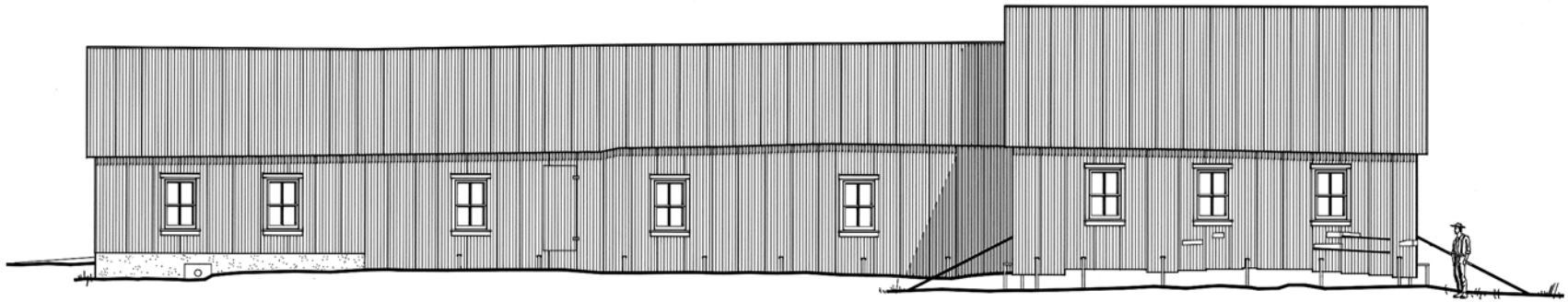
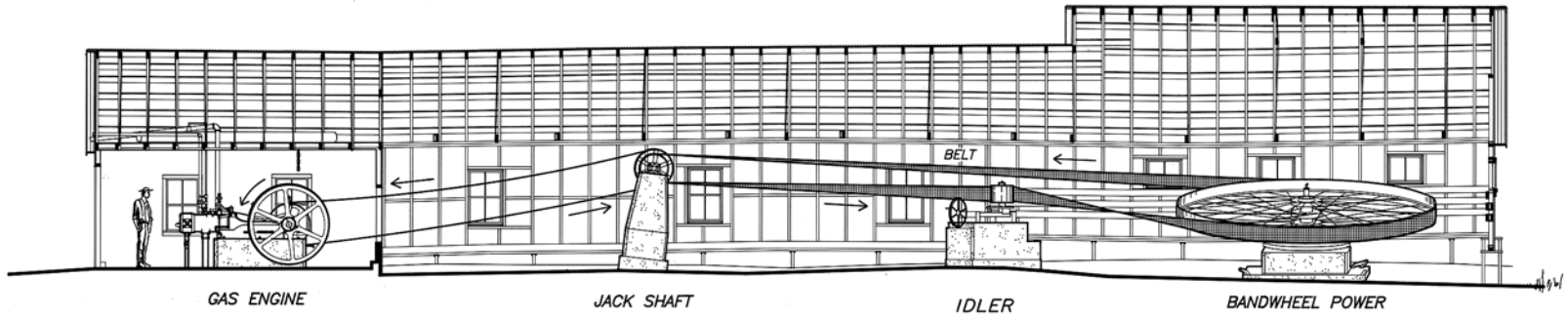


TRIM LINE



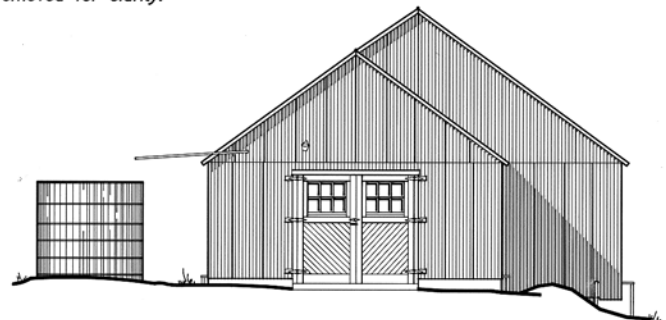
NORTHWEST ELEVATION SCALE 1/4"=1'-0"



SECTION A-A SCALE 1/4"=1'-0"

NOTE: Rod lines, anchor rods and struts removed for clarity.

The Mallory Lot 6 installation taps the small Watsonville pool, part of the Klondike oil field. This pool was discovered in 1896, and produces in the Watsonville (or Kinzua) sand. The wells here were probably drilled in the mid-1890s, and this is likely the second generation of central power on the site. The South Penn Oil Company (the largest producer in the region, later known as Pennzoil) constructed this plant using new and scavenged material in 1939 and operated it until 1987. It is a heavy duty installation suitable for pumping a large number of wells. The powerhouse and related machinery are typical examples of the mature, highly capitalized period of central power systems in northwestern Pennsylvania. This site, now called "The Old Powerhouse," has been restored and is used by Allegheny National Forest for interpretive purposes.



NORTHEAST ELEVATION SCALE 1/4"=1'-0"



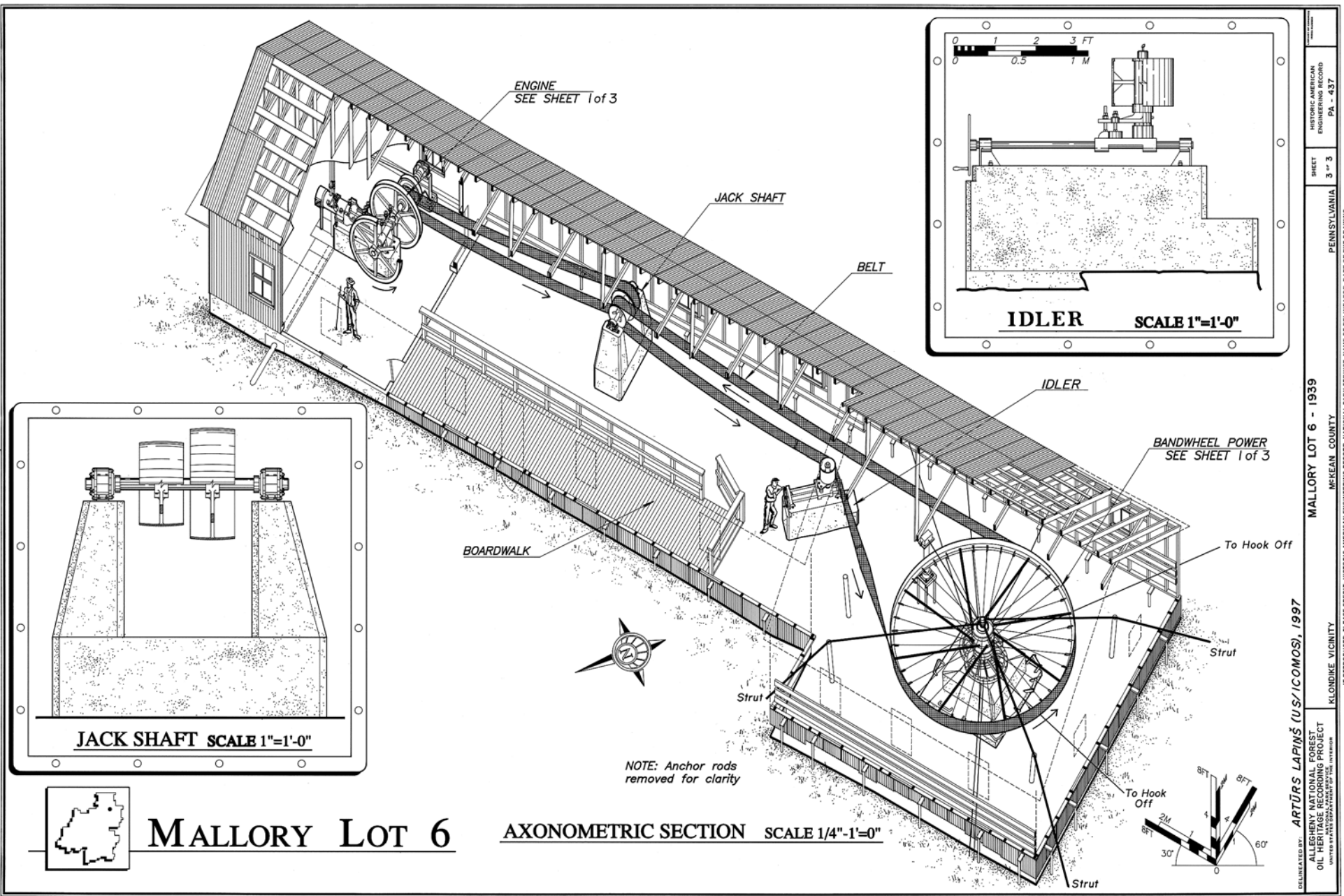
MALLORY LOT 6



HISTORIC AMERICAN ENGINEERING RECORD
 SHEET 2 of 3
 PENNSYLVANIA
 MALLEY LOT 6 - 1939
 MCKEAN COUNTY
 KLONDIKE VICINITY
 ARTURS LAPINS (US/ICOMOS), 1997
 ALLEGHENY NATIONAL FOREST
 OIL HERITAGE RECORDING PROJECT
 CONTROLLED BY PENNSYLVANIA HISTORICAL AND ARCHITECTURAL SURVEY
 IF REPRODUCED, PLEASE CREDIT: HISTORIC AMERICAN ENGINEERING RECORD, NATIONAL PARK SERVICE, NAME OF DELINEATOR, DATE OF THE DRAWING

TRIM LINE

TRIM LINE



MALLORY LOT 6

AXONOMETRIC SECTION SCALE 1/4"-1'=0"

NOTE: Anchor rods removed for clarity

DEVELOPED BY: ARTŪRS LAPIŅŠ (US/ICOMOS), 1997
 ALLIANCE NATIONAL FOREST
 OLYMPIA NATIONAL MONUMENT
 UNDER NATIONAL ANTIQUITIES ACT AND NATIONAL MONUMENT ACT

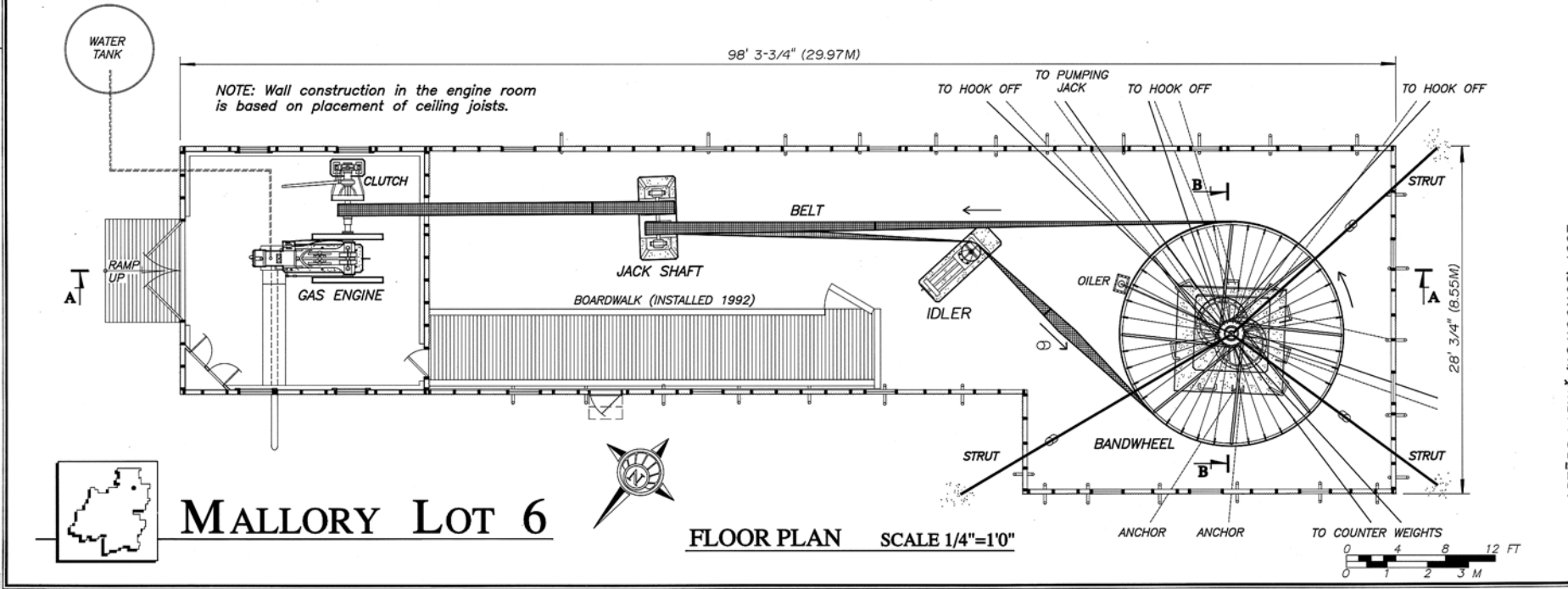
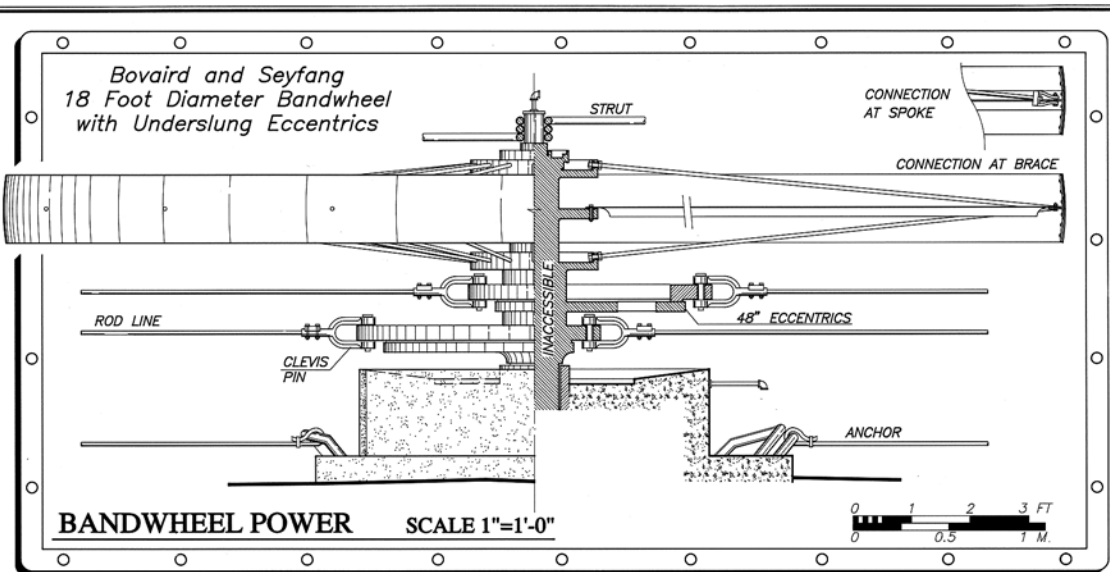
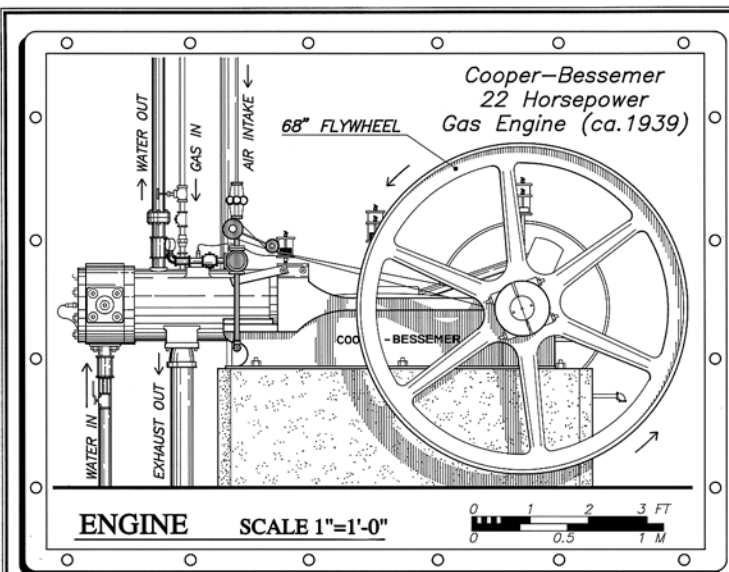
MALLORY LOT 6 - 1939
 MCKEAN COUNTY
 PENNSYLVANIA

SHEET 3 of 3
 HISTORIC AMERICAN
 ENGINEERING RECORD
 PA - 437

IF REPRODUCED, PLEASE CREDIT: HISTORIC AMERICAN ENGINEERING RECORD, NATIONAL PARK SERVICE, NAME OF DELINEATOR, DATE OF THE DRAWING

TRIM LINE

TRIM LINE



ARTURS LAPINS (US/ICOMOS), 1997

DESIGNED BY: PENNSYLVANIA NATURAL HISTORY OIL HERITAGE RECORDING PROJECT

KLONDIKE VICINITY

MALLORY LOT 6 - 1939

PENNSYLVANIA

SHEET 1 OF 3

HISTORIC AMERICAN ENGINEERING RECORD

PA - 437

IF REPRODUCED, PLEASE CREDIT: HISTORIC AMERICAN ENGINEERING RECORD, NATIONAL PARK SERVICE, NAME OF DELINEATOR, DATE OF THE DRAWING

TRIM LINE