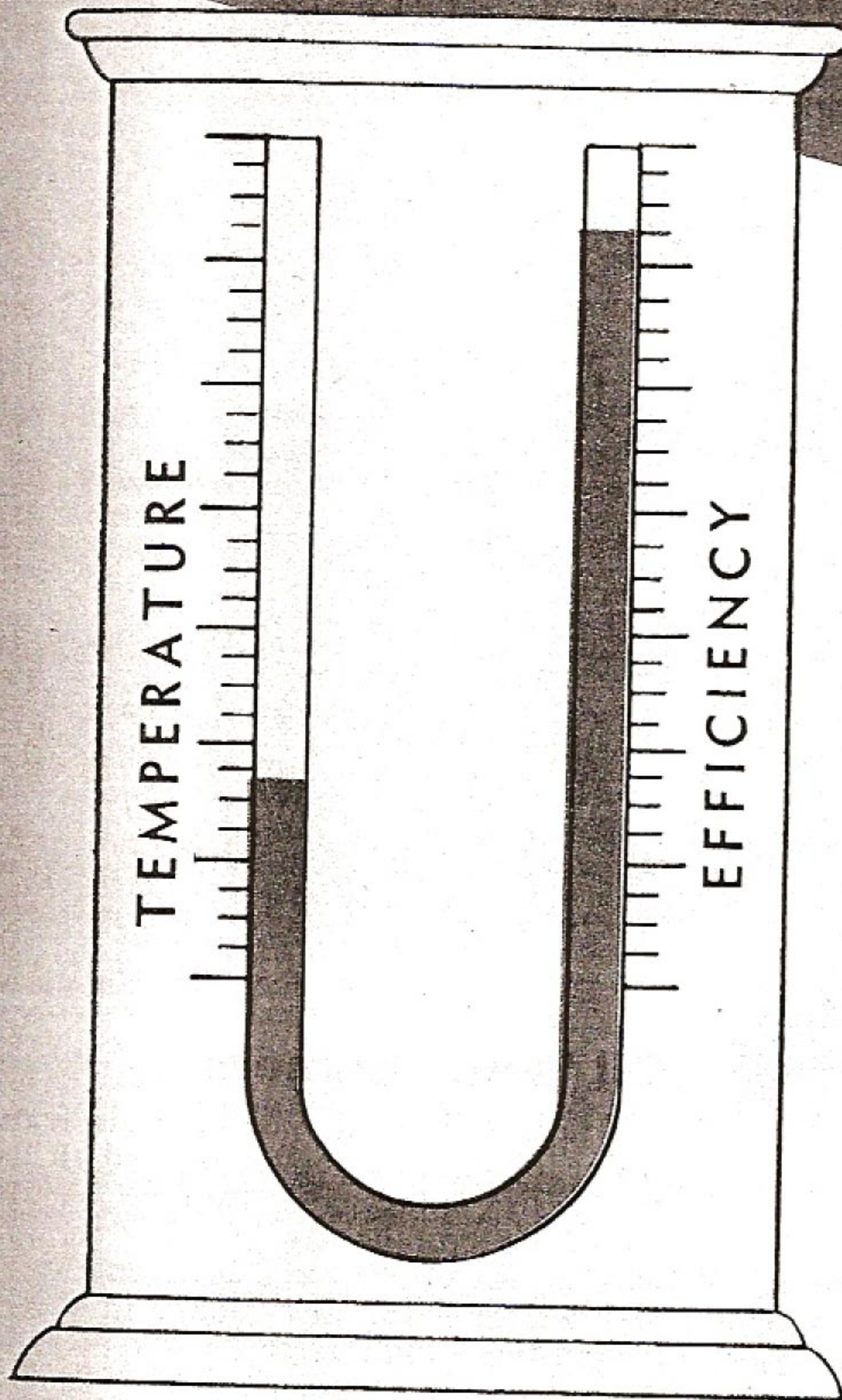


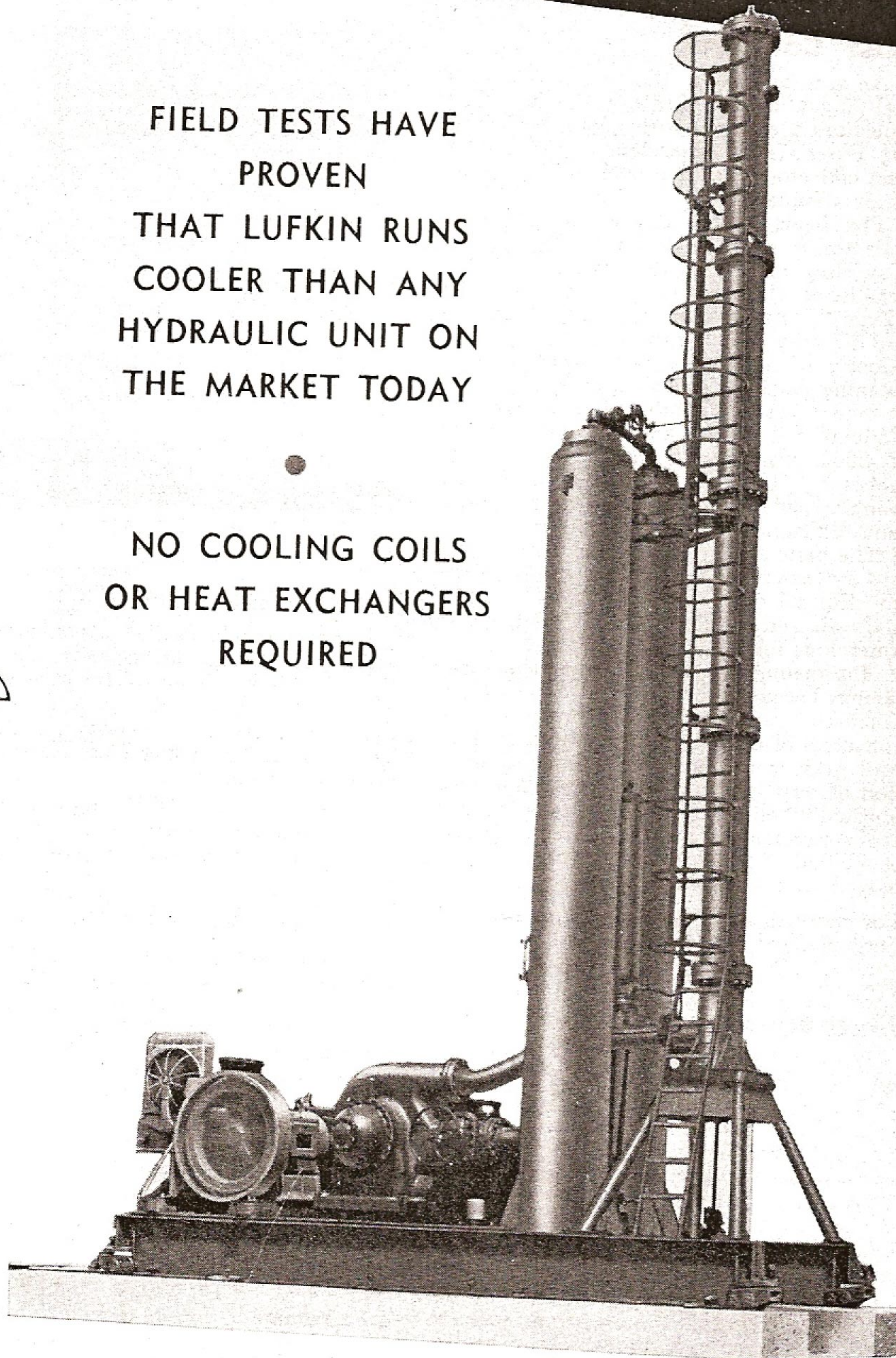
the LUFKIN Hydraulic LONG STROKE UNIT Runs COOL

**LOW OPERATING TEMPERATURE
MEANS HIGH EFFICIENCY!**



FIELD TESTS HAVE
PROVEN
THAT LUFKIN RUNS
COOLER THAN ANY
HYDRAULIC UNIT ON
THE MARKET TODAY

NO COOLING COILS
OR HEAT EXCHANGERS
REQUIRED



- LOW OPERATING PRESSURE.
- LARGE UNRESTRICTED FLOW PASSAGES REDUCE FRICTION LOSS
- PATENTED SELF REVERSING PUMP FOR CUSHIONED REVERSALS
- FULLY AUTOMATIC COUNTER-BALANCE

Lufkin
FOUNDRY & MACHINE COMPANY
LUFKIN, TEXAS

Branch Sales and Service: Houston • Dallas • New York • Tulsa • Los Angeles • Seminole • Oklahoma City • Corpus Christi • Odessa
Kilgore • Wichita Falls • Casper, Wyoming • Great Bend, Kansas • Effingham, Illinois • Duncan, Oklahoma
Brookhaven, Mississippi • El Dorado, Arkansas

Equipment in Canada is handled by THE LUFKIN MACHINE CO., LTD., 14321 108th Avenue, EDMONTON, ALBERTA, CANADA